





# Placentia-Yorba Linda Unified School District Elementary Breakfast Menu February 2018



| Prices & Ala Carte  |        |
|---|--------|
| Student Breakfast.....                                      | \$1.50 |
| Milk.....   | \$0.50 |
| Capri Sun (100% Juice).....                                 | \$0.50 |
| <p>☞ = Contains Pork<br/>           ♪ = Meatless Entree</p> |        |

| Monday  | Tuesday   | Wednesday  | Thursday  | Friday   |
|---|---|--|---|--|
| <b>Daily Breakfast Entrée Option: Cereal &amp; Cheese Stick</b>   |   |  |   |  |
| <b>29</b><br>Cinnamon Glazed French Toast Sticks ♪<br>Orange Juice<br>Fruit & Milk  | <b>30</b><br>Warm Bagel w/Cream Cheese ♪<br>Apple Juice<br>Fruit & Milk       | <b>31</b><br>Buttermilk Bar Twins ♪<br>Wild berry Juice<br>Fruit & Milk                | <b>1</b><br>Cheddar Cheese Swirl ♪<br>Orange Juice<br>Fruit & Milk                              | <b>2</b><br>Yogurt & House Made Granola ♪<br>Apple Juice<br>Fruit & Milk         |
| <b>5</b><br>Sunny Side Up Sandwich (Egg, Turkey- Ham & Cheese)<br>Orange Juice<br>Fruit & Milk                                      | <b>6</b><br>Pan Dulce ♪<br>Apple Juice<br>Fruit & Milk                        | <b>7</b><br>Breakfast Cheese Pizza Bagel ♪<br>Wild Berry Juice<br>Fruit & Milk         | <b>8</b><br>Mini-Blueberry Waffles ♪<br>Orange Juice<br>Fruit & Milk                            | <b>9</b><br>Egg w/ Chix Chorizo Wrap<br>Apple Juice &<br>Fruit & Milk            |
| <b>12</b><br>Lincoln's Birthday<br>No School<br>   | <b>13</b><br>Glazed Cinnamon Roll ♪<br>Apple Juice<br>Fruit & Milk            | <b>14</b><br>Sunrise Sandwich (Sausage & Cheese) ☞<br>Wild Berry Juice<br>Fruit & Milk | <b>15</b><br>Bean & Cheese Breakfast Burrito ♪<br>Apple Juice<br>Fruit & Milk                   | <b>16</b><br>Banana Mini-Pancakes ♪<br>Orange Juice<br>Fruit & Milk              |
| <b>19</b><br>Presidents Holiday<br>No School<br> | <b>20</b><br>Warm Bagel w/Cream Cheese ♪<br>Orange Juice<br>Fruit & Milk      | <b>21</b><br>Pancake /Turkey Sausage Wrap<br>Apple Juice<br>Fruit & Milk               | <b>22</b><br>Egg ,Turkey Sausage & Cheese Breakfast Sliders<br>Wild Berry Juice<br>Fruit & Milk | <b>23</b><br>Blueberry Muffin Square ♪<br>Orange Juice<br>Fruit & Milk           |
| <b>26</b><br>Egg, Sausage & Cheese Breakfast Burrito ☞<br>Apple Juice<br>Fruit & Milk   | <b>27</b><br>Mini-Apple Breakfast Bites ♪<br>Wild Berry Juice<br>Fruit & Milk | <b>28</b><br>Ham & Cheese Croissant ☞<br>Orange Juice<br>Fruit & Milk                  | <b>1</b><br>Pan Dulce ♪<br>Apple Juice<br>Fruit & Milk  | <b>2</b><br>Egg, Cheese & Turkey Bacon Toast<br>Wild Berry Juice<br>Fruit & Milk |



= PYLUSD Recipe

Presidential Quotes-  
 "I cannot tell a lie ..." turns out the story of George Washington chopping down the cherry tree was a myth..

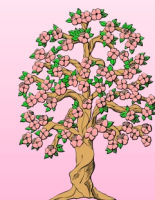


The nutrition in cherries is no myth..

A cup of **cherries** has 3 grams of fiber, which aids in digestion, lowers cholesterol, controls blood sugar and can help maintain healthy weight.

**Cherries** are a good source of vitamin C, with 16% of the daily recommended value in 1 cup.

**Cherries** also contain vitamin A, calcium, protein and iron .



*This institution is an equal opportunity provider—Menus Subject to Change*

Chef Solus Valentine's Day Healthy Heart Word Search Puzzle!



Visit [www.ChefSolus.com](http://www.ChefSolus.com) for free kids' nutrition games, interactive word puzzles and fun healthy food activities! Copyright © Nourish Interactive. All Rights Reserved.

## EVERY STUDENT HAS A PIN....

Even if you do not eat in the Cafeteria,  
YOU have a special PIN.  
It is special for every  
student.

What is your Meal PIN?

**HINT:** It is the same as  
your computer number.

(write your PIN here)

Learn your PIN and get through the  
Lunch Line Faster.

